

HOMESTEAD GARDEN ROOM



El Questro

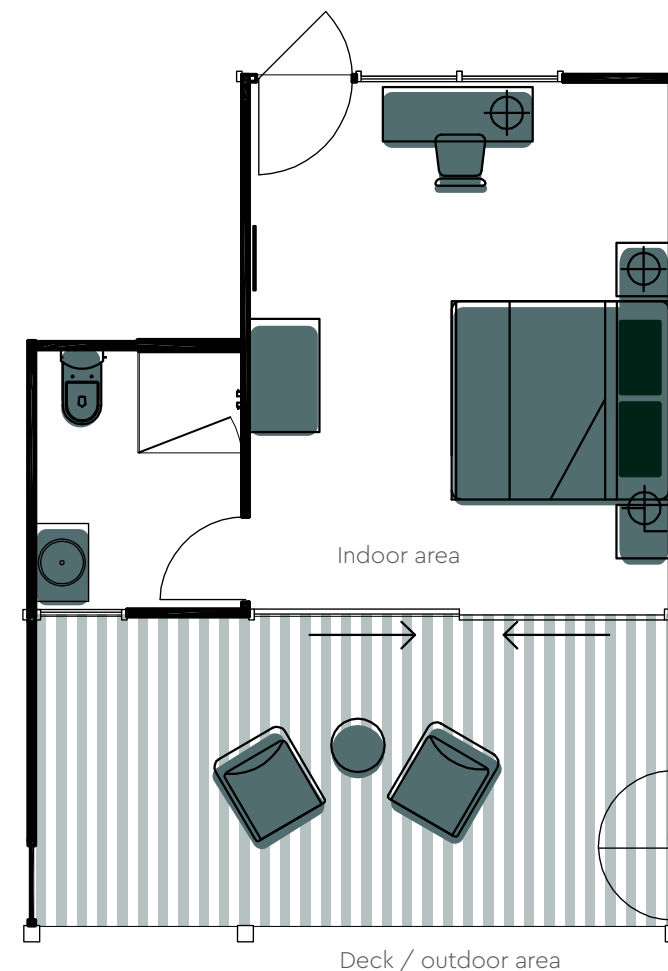
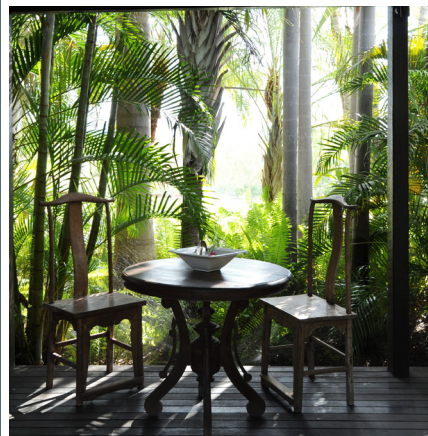
As their name suggests these Chamberlain Gorge rooms are perched above the stunning and magical Chamberlain Gorge, giving breathtaking views of the gorge itself as well as the outstretched beauty of El Questro.

Spacious, modern and stylish, with a private deck, these rooms are luxurious and comfortable with floor-to-ceiling windows ensuring you're always surrounded by the spectacular Kimberley landscape. Relax in the outdoor lounge area before bathing in the indoor/outdoor stone bathtub, which is cantilevered over the gorge.

Maximum 2 people 3 Homestead Garden Rooms available

The Homestead contains the following amenities and facilities:

- Double king bedrooms (2 king single beds by arrangement)
- Luxe fittings to en suite bathrooms
- AESOP bath products
- In room Bose Wave™ sound system
- Air-conditioning
- Ceiling fans
- Swimming pool
- Tennis court
- All inclusive self-serve bar (excludes Cellar Master wine selections)
- Complimentary Wifi to public areas
- Valet laundry service
- Complimentary In room beverage selection
- Small business centre



Please note: the configuration and features of each room and suite may vary. Floor plans are not to scale and should be used as a guide only.



El Questro

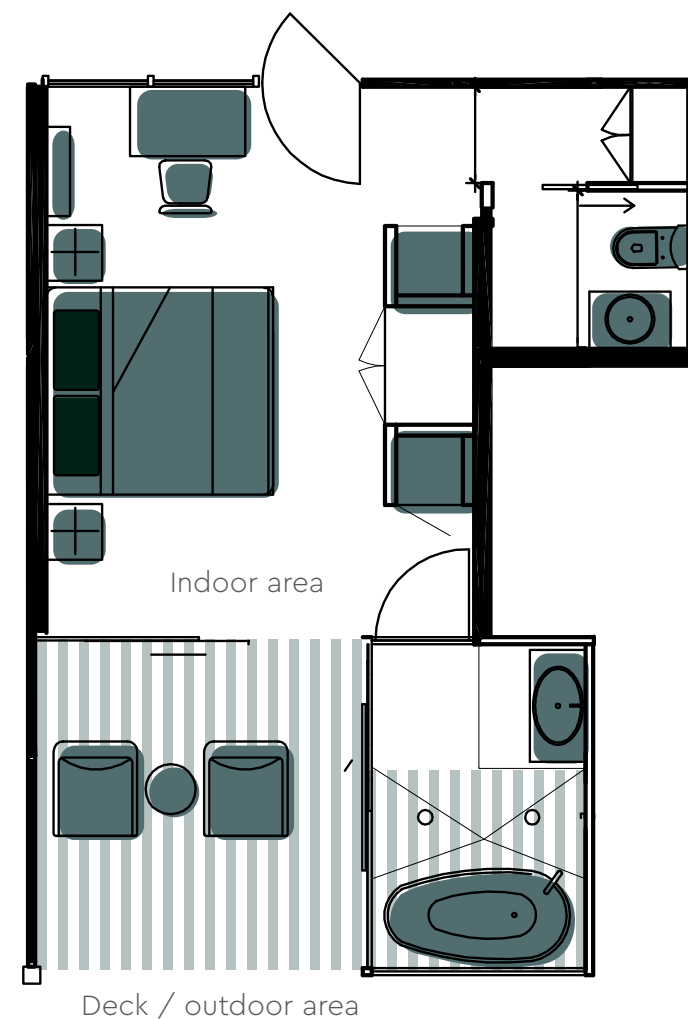
GORGE VIEW ROOM

Chamberlain Gorge Rooms are perched above the Chamberlain River and feature a private deck with lounge furniture overlooking the gorge allowing guests to relax in total privacy. All rooms are stylishly appointed and feature a modern en suite bathroom with a private indoor/outdoor stone bathtub cantilevered over the Gorge. The rooms are air-conditioned. Bedding consists of 1 king size bed (2 king single beds by arrangement).

Maximum 2 people 2 Gorge View Rooms available.

The Gorge View Room contains the following amenities and facilities:

- Double king bedrooms (2 king single beds by arrangement)
- Luxe fittings to en suite bathrooms
- AESOP bath products
- In room Bose Wave™ sound system
- Air-conditioning
- Ceiling fans
- Swimming pool
- Tennis court
- All inclusive self-serve bar (excludes Cellar Master wine selections)
- Complimentary Wifi to public areas
- Valet laundry service
- Complimentary In room beverage selection
- Small business centre



Please note: the configuration and features of each room and suite may vary. Floor plans are not to scale and should be used as a guide only.



El Questro

CLIFF SIDE RETREAT

The Homestead's three freestanding Cliff Side Retreats are the newest addition to the property and are situated at the edge of a sheer escarpment, giving you uninterrupted views of the Kimberley wilderness and the Chamberlain River below. This spectacular vista can be enjoyed at every turn with the retreats' floor-to-ceiling sliding glass windows infusing the room with both light and beauty.

Secluded by high stone garden walls, your privacy is assured while you enjoy either the outdoor shower or free-standing bath from which you can watch the sun set on another perfect Kimberley day.

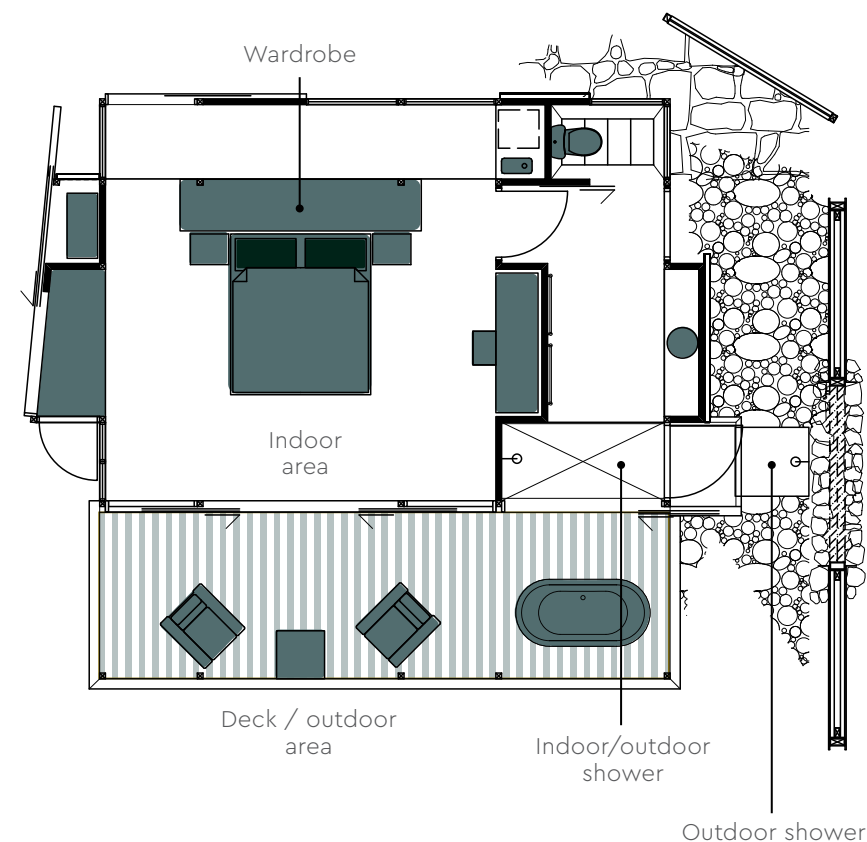
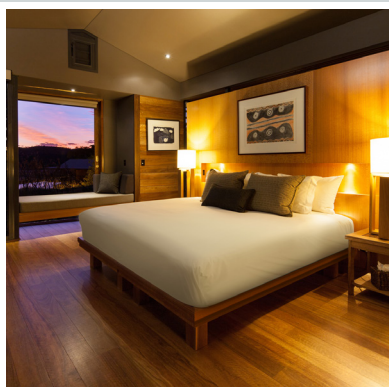
When ready to retire you'll be able to sink into a feather topped bed and drift off to the sound of El Questro after dark.

Maximum 2 people

3 Cliff Side Retreats available

The Cliff Side Retreat contains the following amenities and facilities:

- Double king bedrooms (2 king single beds by arrangement)
- Luxe fittings to en suite bathrooms
- AESOP bath products
- In room Bose Wave™ sound system
- Air-conditioning
- Ceiling fans
- Swimming pool
- Tennis court
- All inclusive self-serve bar (excludes Cellar Master wine selections)
- Complimentary Wifi to public areas
- Valet laundry service
- Complimentary In room beverage selection
- Small business centre



Please note: the configuration and features of each room and suite may vary. Floor plans are not to scale and should be used as a guide only.

THE CHAMBERLAIN SUITE

Dramatically cantilevered over the edge of Chamberlain Gorge, the Chamberlain Suite is the Homestead at its most luxurious.

Modern and stylishly designed with rustic Australian furnishings this suite offers breathtaking panoramic views of the Kimberley landscape via its floor-to-ceiling windows and wraparound veranda. With an outdoor dining area as well as an indoor/outdoor double deluxe bath for two you are free to choose how to best enjoy the infamous El Questro sunset.

Perfect for Honeymooners or for those looking to experience the Kimberley in the utmost luxury.

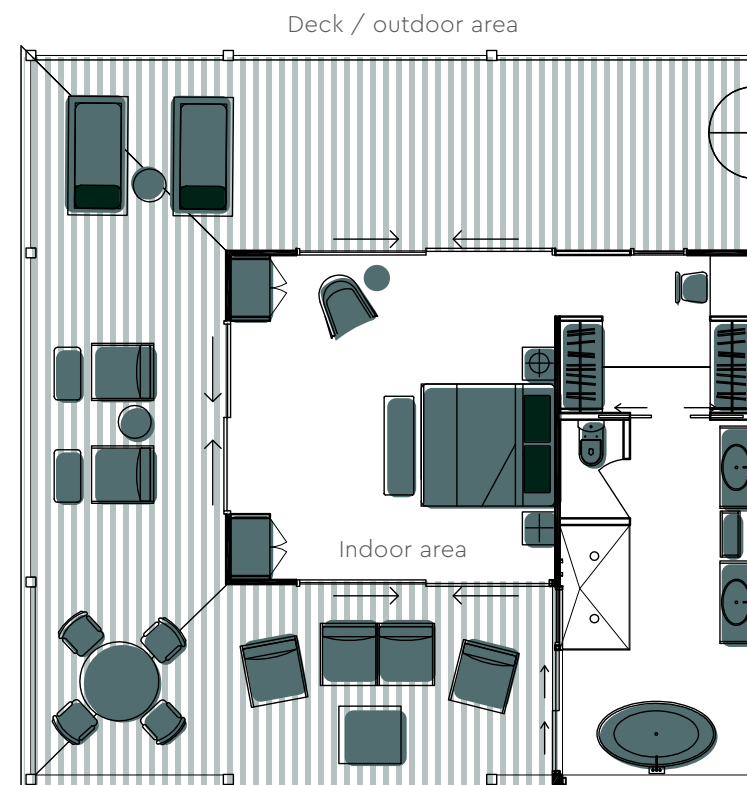
Maximum 2 people **1 Chamberlain Suite available**

The Chamberlain Suite contains the following amenities and facilities:

- Double king bedrooms (2 king single beds by arrangement)
- Luxe fittings to en suite bathrooms
- AESOP bath products
- In room Bose Wave™ sound system
- Air-conditioning
- Ceiling fans
- Swimming pool
- Tennis court
- All inclusive self-serve bar (excludes Cellar Master wine selections)
- Complimentary Wifi to public areas
- Valet laundry service
- Complimentary In room beverage selection
- Small business centre



Please note: the configuration and features of each room and suite may vary. Floor plans are not to scale and should be used as a guide only.



ROOM LOCATIONS

